

benefactor

Fall 2019

NEIGHBORHOOD KIDS Family-Based Grief Support Program

"Neighborhood Kids" is a family-based bereavement support program designed to bring families together during a time of loss and sadness, utilizing alternative therapies such as art, music and pets.

What do you
do with the sad
that you feel?
• Fred Rogers

LOCATION

Excelsa Latrobe Hospital | Behavioral Health Building
One Mellon Way, Latrobe

PARKING

Excelsa Patient Parking Lattanzio Lot
(Entrance to Behavioral Health is in the parking lot)

DATES

| | | |
|------------------------|-------------------|------------|
| 5:30 - 7 p.m. Mondays | Sept. 16 - Oct. 7 | Ages 5-9 |
| 5:30 - 7 p.m. Tuesdays | Oct. 15 - Nov. 5 | Ages 10-13 |
| 5:30 - 7 p.m. Mondays | Nov. 11 - Dec. 3 | Ages 14-19 |

REGISTRATION

1-877-771-1234 For questions about the groups, call our Bereavement Counselors: 724-689-1800

JCH FOUNDATION
Supported by the Jamie Cordial Hall Foundation
In memory of Jamie Cordial Hall

ExcelsaHealth
HOME CARE & HOSPICE



Excelsa Health art therapist Kristy Walter helps children share their feelings through creative expression during new Neighborhood Kids grief group.



Dale and Michele Hall are supporting Excelsa Health to help grieving children like Chloe and Cody in memory of their daughter. (Photo credit: SkySight Photography)

What Do You Do With The Sad That You Feel? New Grief Program Helps Children Process Emotions

A collaboration among Excelsa Health, the Fred Rogers Center for Early Learning and Children's Media, and Seton Hill University is giving children a safe space in which to express their feelings of grief and loss. The partnership was conceived to serve bereaved children and their families in Westmoreland County, where previously no such service was available.

Two years in development, the capstone of this effort is Neighborhood Kids, a series of age appropriate grief groups meeting for the first time this fall at Excelsa Latrobe Hospital. Each session lasts four weeks, and uses art, music and pet therapy to help participants convey thoughts that are often too difficult to put into words. Meeting in the Behavioral Health Services Outpatient area of the hospital which is already kid-friendly in furnishings and ambience, each group is facilitated by Excelsa bereavement counselors Maureen Ceidro and Kristy Walter, a graduate of Seton Hill's art therapy program.

During the development of the curricula for the grief groups, the Fred Rogers Center contributed knowledge of child development and the wisdom offered by Fred Rogers on how children grieve and the ways adults can support that process.

In Fred Rogers' words, "Anything that's human is mentionable, and anything that is mentionable can be more manageable."

Neighborhood Kids is part of a full complement of bereavement services offered through Excelsa Health Home Care & Hospice, and

supported by donations from the Jamie Cordial Hall Foundation, which was created by Dale and Michele Cordial to honor the memory of their daughter following her untimely death a few months after giving birth. The foundation has provided seed money to Excelsa Health to create the environment in which a child's grief can be processed. From art supplies to bean bag chairs and djembe drums, these resources will help bereavement counselors physicalize emotions for children and adults alike.

On an annual basis, Excelsa Health Home Care & Hospice cares for almost 9,000 patients and their families. Part of that care is 13 months of bereavement support after a hospice patient dies. But there were other unmet needs - grief and bereavement services for children and adolescents who have experienced loss of all types, not just following hospice care.

It's been reported that one child out of every 20 will have a parent die before they finish high school - from injury, illness, self-harm such as substance abuse or a medical complication like the post-partum hemorrhage experienced by Jaime Cordial Hall.

Neighborhood Kids will be offered twice a year, with the next sessions scheduled for Spring 2020. It is hoped that families will return as children move through their developmental process to address the changing ideas and understanding of grief and loss as they mature. Inquiries regarding the groups may be directed to Excelsa Health Home Care & Hospice, 724-689-1800.

Grateful Patient, Grateful Friends Recognize Great Recovery



The morning of the 30th Masonic District's 2018 golf outing, Ervin Boyce was preparing to capture golf strokes as part of his official duties as event photographer. He was unprepared for the stroke he experienced before leaving his Derry Township home. Thankfully, Excelsa Latrobe Hospital is a designated Primary Stroke Center, and just minutes away. Ervin's recovery and continued rehabilitation were just as close in the hospital's EPIC Rehab center.

While the annual golf outing typically supports youth programs across the Masonic District, the committee earmarked a portion of proceeds from the 2019 event as a gift to LAHCF in honor of Ervin and in recognition of the excellent care he received.

Recently, Ervin and his wife, Jean, and Josh Freeman, Masonic District Deputy Grand Master, visited with the EPIC staff where they happily witnessed his strong recovery on the EPIC putting green. He is eager to join his fellow Masonic brothers back out on the course next year!



Foundation Nears 25th Anniversary

"To identify and pursue the improvement of the health status of the community, exemplary medical practice, healthcare education needs, collaborative opportunities with distinguished academic centers, meaningful and informative community relations activities and supportive fundraising activities."

In 1995, this was the mission established for Latrobe Area Hospital Charitable Foundation ... and it remains our mission today. LAHCF will celebrate its 25th anniversary next year and proudly look back over the many accomplishments made over the years, as well its plans for the future.

In 2020, the Foundation will celebrate this important milestone with its many supporters, donors, trustees, hospital leaders, friends and the local community. We look forward to having YOU join us in the celebration! Look for more information in future publications.

Improving Health Care and Wellness by Supporting:

- Patient Care Enhancements
- Quality and Patient Safety Initiatives
- Family Medicine Residency Education
- Community Health and Wellness Education
- Health Profession Scholarships
- Professional Staff Development

Welcome, Residents!

For the third year, the Latrobe Area Hospital Aid Society and the Latrobe Area Hospital Charitable Foundation jointly hosted a reception at Latrobe Country Club to welcome eight new residents to the Family Medicine Residency program. In attendance were several Foundation trustees as well as Excelsa administrators along with incoming residents and program graduates.





From The Foundation Chairman

Excelsa Health's "medical mall" approach to providing ambulatory care as it currently exists at Excelsa Square Latrobe is now available at Excelsa Square at Frick.

Over the past several years a variety of Excelsa Health physician specialists in cardiology, gastroenterology, orthopedics and sports medicine and pain management have relocated to the Mount Pleasant site. Earlier this year, two primary care offices - Main Street Medical in Mount Pleasant Borough and Norvelt Family Medicine in Mount Pleasant Township - came together as Excelsa Square Frick Family Medicine, and continue on as a Family Medicine Residency teaching practice.

Located on the first floor of the campus, which also is home to Excelsa Frick Hospital, the family medicine practice places its patients in the same building where they can take full advantage of diagnostic testing and other specialty care. The campus also offers an advanced lung center and advanced wound center. These resources combine to provide patients access to the majority of medical services they will need over a lifetime.

The Family Medicine Residency program continues to provide a high-quality niche program for those choosing primary care careers. It has been instrumental in building the network of board-certified Family Medicine practitioners for our Westmoreland region. Our patients appreciate the convenience of a one-stop facility for their health needs knowing they are receiving top care from the team of Residents and Residency Faculty. Excelsa Square at Latrobe has proven to be very successful in using this particular model for patient care since its opening in 2018.

On behalf of the Foundation's board of directors, I thank you for your continued support.

Thomas P. Gessner, MD
Chairman



Welcome, Phyllis

In keeping with Latrobe news, our Foundation Board recently recruited a new trustee to its current 13-member board in order to maintain the sustainability and vibrancy of our organization. I am pleased to announce that Phyllis Ruffner of Latrobe has agreed to serve as our newest trustee. Phyllis is a graduate of the Latrobe Hospital School of Nursing and went on to receive her Bachelor of Science degree. Having worked at Excelsa as a nurse, community educator, and administrator over many years, she is well known and well respected by clinicians. She is a member of the Latrobe Area Hospital Aid Society having served as president in 2014 and 2015 and is fully immersed in the Latrobe community. She loves both this community and Latrobe Hospital. The Foundation extends a warm welcome to Phyllis.



Annual Fund

Every year, your generous gift supports essential projects at Latrobe Hospital. This year, donations totaling more than \$1.2 million were designated for the remodeling of 4th floor patient rooms, educational initiatives for the Family Medicine Residency program, support for Home Care & Hospice, upgrades to medical equipment used for prostate cancer procedures, scholarships awarded to area high school students, and much more... all to preserve our patients' health and well-being.

We depend on your support to improve the quality and availability of the very best healthcare practices for all our patients. Please see the enclosed letter and consider making your donation today online at ExcelsaHealth.org. search giving or use the enclosed envelope.

We thank you for your consideration of a gift.

Message from Al Novak, Vice President and Chief Development Officer



Every gift – small or large – enhances and strengthens our ability to improve the health and well-being of every life touched by healthcare services to our community. The Foundation's commitment to this community-healthcare partnership has been unwavering since its creation in 1995.

Next year, the Foundation celebrates its 25th anniversary. It is gratifying to look back at the many accomplishments over the years, but equally exciting to look ahead to our future. A future that includes you, our benefactors, who share our vision for excellence in healthcare right here – in our community.

Your ongoing support is not only recognized – it's celebrated, as is fitting when receiving a gift. From your generous investment, Excelsior can continue to recruit the

top physicians in the country, offer new technology in medical procedures, earn prestigious and notable awards for quality care delivery, and much more. In short, your support is integral to honoring the promises made to our community for exceptional health care services, if and when needed.

Below please find a three-year financial summary of Foundation resources starting from July 1, 2015 indicating the disbursements of funds per fiscal year.

Thank you for being a loyal benefactor.

Albert J. Novak, Jr.

Alumni of Distinction

Greensburg Salem Education Foundation honored Al Novak as one of its distinguished alumni at a banquet earlier this year. The education foundation established the award in 2014 to honor graduates for "their dedication to public service and their community and most importantly for being a role model for youth."

Congratulations, Al!

Condensed Statement of Activities — 3-Year Summary

| | FY 17/18 | FY 16/17 | FY 15/16 |
|--|------------------|------------------|------------------|
| MISSION-BASED DISBURSEMENTS | | | |
| Community Health & Wellness Education | 4,420 | 8,430 | 71,467 |
| Patient Care Enhancements | 370,656 | 232,087 | 37,642 |
| Quality and Patient Safety Initiatives | 33,654 | 357 | 273,097 |
| Professional Development | 4,350 | 13,830 | 5,621 |
| Student Scholarships | 14,563 | 14,848 | 5,591 |
| Family Medicine Residency | 6,917,179 | 3,092,232 | 7,737 |
| TOTAL | 7,344,822 | 3,361,784 | 401,155 |
| OPERATING EXPENSES | | | |
| Salaries, Benefits, Consulting | 138,453 | 161,710 | 176,073 |
| Stewardship & Administration | 135,994 | 102,860 | 40,952 |
| Fundraising | 44,531 | 31,066 | 67,329 |
| TOTAL | 318,978 | 295,636 | 284,354 |
| SOURCES OF SUPPORT | | | |
| Community Support | 1,875,847 | 2,509,679 | 5,961,436 |
| Investment Income | 418,536 | 356,823 | 330,055 |
| TOTAL | 2,294,383 | 2,866,502 | 6,291,491 |

IRS Form 990 can be viewed at www.guidestar.org

2019 Golf Outing Benefits Adolescent Behavioral Health

The LAHCF golf outing was held June 20, 2019, at Ligonier Country Club with 120 golfers in attendance. This year's proceeds of \$30,000 directly benefitted Child and Adolescent Behavioral Health Services.

The 11-bed Inpatient Unit located on the fourth floor of Excelsa Latrobe Hospital opened in 2000 and has grown in scope to be a regional provider of care for children and adolescents ages 5 through 18 in need of hospitalization. The program provides 24-hour care from a specialized treatment team augmented by outpatient options for individual counseling, family therapy, trauma-informed care and medication management. We thank the staff from Behavioral Health for joining the Foundation to help at the golf outing.

It is with sincere gratitude that we recognize the following individuals and businesses who generously supported the outing through their contributions and sponsorships:

Eagle Sponsor

SEI Investments

Birdie Sponsors

A. Martini & Co., Inc.
ArTech
CDW
Consolidated Communications
Dan and Vicki DiCola
MBM Contracting, Inc.
Prism Response LLC
PWA Wealth Management –
Joe Scarpo
Tudi Mechanical System
Western PA Electrical Labor
Management Cooperation
Committee
Westmoreland/Frick Hospital
Foundation

Par Sponsors

Chemway, Inc.
Doug Clark
Craig Communications, Inc.
Crown Castle Fiber
Excelsa Health
Flooring Contractors of Pittsburgh
Fords Complete Construction
Service
Garratt-Callahan
Tom Gessner, MD
Wayne Greyno
Limbach Company LLC
Allison Lutz
O.Z. Enterprises, Inc.
Pittsburgh Interior Systems, Inc.
Procirca
Prominence Advisors
Radiologic Consultants LTD
John Santarlas
Signs By Tomorrow
SSM Industries
Kelly Turer
Barbara Wang, MD

Tee Sponsors

BMW Data/Com Sales, LLC
Crown Castle Fiber
Excelsa Health
Flooring Contractors of Pittsburgh
Fotorecord Print Center
Garratt-Callahan
Dr. Jerome "Skip" Gera
Graybar Elec/Allen Tel Products
O.Z. Enterprises, Inc.
Pittsburgh Interior Systems, Inc.
SSM Industries, Inc.
Saint Vincent Archabbey
Saint Vincent College
Saint Vincent Seminary
The Fastener Stop
Tim Fedele, Esq.

Additional Sponsors and Contributors

Beverage Cart – Excelsa Health
Medical Staff
Golf Carts – SEI Investments
James Breisinger
Covington Investment Advisors, Inc.
Dr. Tom and Penny Gessner
Ligonier Country Club
Al Novak
PDS
Dr. Mike Semelka
Seven Springs Mountain Resort
Verizon

2019 Foundation Golf Committee Members

Dino Carota
Maureen Crevak
Holly DiBiasi
Dr. Dan and Vicki DiCola
Dr. Tom Gessner
Scott Koscho
Dr. Dean Matanin
Al Novak
Maryann Singley
Pat Warren

A special thanks to our Foundation board members who participated in the outing!



Doug Clark, Secretary and Dr. Barbara Wang, Vice Chair



Joe Dreskler, Joe Scarpo, Treasurer, Bob Faye, and Dom Valore



Dr. Tom Gessner, Chair, John Sphon, Excelsa Acting CEO, and Al Novak, Vice President and Chief Development Officer

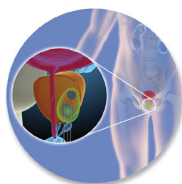


George Mizikar, Donna Harshell, Rachel Jackson, Susan Overly

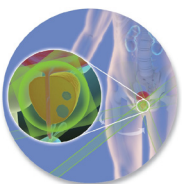
Celebrating Partnership in World-Renown Cancer Care



Radiation oncologist Sanjeev Bahri and urologist Norman Gebrosky consult prior to administering HDR treatment to prostate cancer patient



Brachytherapy works 'from the inside, out'



External beam radiotherapy (EBRT) works 'from the outside, in'

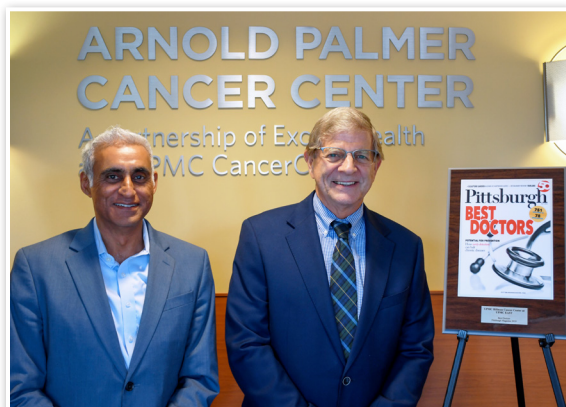
men undergoing prostate cancer treatment, individuals like Bob Dalicandro of South Greensburg, who is under the care of Arnold Palmer radiation oncologist Sanjeev Bahri, MD and the urologists of GU, Inc. who provide care at Latrobe Hospital. Bob credits Excelsa Health and these physicians with his early diagnosis and treatment, and is grateful to the donor who made improvements possible.



Bob Dalicandro

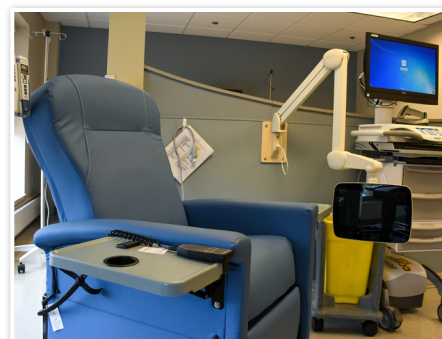
Best Doctors on the Cancer Team

Two physicians serving cancer patients in Westmoreland County are among those recognized in Pittsburgh Magazine's 2019 "Best Doctors" issue. The list was compiled by Best Doctors® and derived from the Best Doctors in America® database which includes the names and profiles of more than 50,000 of the best doctors in the United States across various specialties. Congratulations to Sanjeev Bahri, MD, Radiation Oncology and Terry Evans, MD, Medical Oncology/Hematology who are part of the team at Arnold Palmer Pavilion at Mountain View.



"They Are Just Like Me"—a Donor Spotlight

Compassion is the greatest virtue, which depends on the thought that others are "just like me." During seemingly endless hours spent in the treatment area at the Arnold Palmer Pavilion, one thought arose, "they are just like me, and I want to do something to help them."



It was the donor's wish to honor oncologist Terry Evans, MD, as well as celebrate his spouse's courageous spirit through a memorial gift that would improve the patient experience for those who will need care in the future. He recognized the serious need to replace and upgrade the medical oncology patient treatment area. Through his generous gift, 26 regular chairs and two bariatric chairs were purchased, each one featuring amenities that dramatically improve patient comfort. The chairs offer heat and massage, a side table, cup holder and are fully adjustable to achieve a desired position. Additionally, 14 personal size televisions replaced original sets that were installed when the facility opened nearly two decades ago. Patients greatly appreciate these new upgrades that enhance their well-being and Excelsa is grateful to such thoughtful donors who help us "improve the health and well-being of every life we touch".

With Thanks To Our Benefactors

The following individuals, corporations, foundations, and organizations contributed to the Foundation from July 1, 2018 through July 31, 2019

1 Natural Way, LLC, in memory of Frederick W.
"Chips" Enfield

A. Martini & Co., Inc.

Linda M. and Thomas Adair, in memory of Glema Burke

Dennis R. Adams, in memory of Lois Jane Dick

J. Fern Aikens, in memory of Lois Jane Dick

Cynthia M. Akins, in memory of Robert E. Akins

Mr. and Mrs. Thomas S. Albanesi, Jr.

David and Stephanie Albaugh, in memory of
Lois Albaugh

John A. Allen, in memory of Amy Allen

Carol and Leigh Altadonna, in memory of Paul D. Patla

Paul N. Altman, in memory of Vickie Altman

Diane Amatucci, in memory of John L. Amatucci

Dr. Paul W. Ament, in memory of Nancy J. Swink,
Merle F. Ray, Paul J. Kerila, William T. Dunlap,
William Kuhar, Angelo Bevilacqua, Norbert Sulecki,
Dr. Mani S. Sekhon, Josephine A. Mull

Dr. Edward Anderson

Georgeanna B. and Donald D. Anderson, in memory of
Marie R. Hopper

Katherine A. Anderson, in memory of John William
Brinker, Sr.

Janice A. Andiorio, in memory of Joseph Iezzi

Kathleen Andrews, in memory of Jack Andrews

Mary E. Andrighetti, in memory of John R. Andrighetti

Anonymous (3)

Family of Donna Antoniak, in memory of Donna
Antoniak

Stefan A. Antoniak, in memory of Donna Antoniak

Deborah H. Apel, in memory of George Wegley

Stephanie and Dan Apone, in memory of Bernadette M.
Flowers

Arnold D. Palmer 2003 Charitable Trust

Antoinette C. Aromatorio

ArTech Group LLC

Rosalind L. Ashmun, in memory of Richard Ashmun,
Christopher Cunningham

Tom and Sandy Ashoff, in memory of Ernest Martinelli, Jr.

Robert Bacci

Doris Baird Family, in memory of Doris Baird

James V. Baird, in memory of Doris Baird

James J. Baker, Sr., in memory of Gertrude B. Baker

Betty J. Balcerek, in memory of Walter J. Balcerek

Barbara and Kristi Ballash, in memory of Bernard J.
Ballash

Dennis and Connie Baluh, in memory of Pauline and
Joe Baluh

Kara Barauskas, in memory of Joseph P. Barauskas

Mr. and Mrs. William R. Barber

Peg Barkey, in memory of Michael A. Barkey

Martin C. and Andrea Barkey, in memory of Michael A.
Barkey

Stephen R. Barkey, in memory of Michael A. Barkey

Tom and Bonnie Barnhart, in memory of Cole K. Barnhart

Dolores Baroli, in memory of Albert Lenz, Maria Zenone

Gary and Dolly Barrett, Gary D. and Chrissy Barrett, TJ
Barrett and Kim Shiring, Jenna and Shawn Skeans, in
memory of Paul D. Patla

Elizabeth M. Gaston Barsoum, in memory of Lt. Col.
Donald E. Gaston

Kevin M. and Rebecca L. Bartolomucci

Brenda Batenburg, in memory of Frederick W.
"Chips" Enfield

Rose and Josephine Battaglia, in memory of Pauline B.
Tiberi

Lisa Beckett

William and Beth Ann Bell, in memory of Paul D. Patla

William A. Bencloski, in memory of Violet A. Bencloski

Robert E. Benner, in memory of Shirley C. Benner

Mr. and Mrs. William F. Benton

David and Luann Beresford, in memory of Paul D. Patla

Clay Beringer, III, in memory of Ernest Martinelli, Jr.

Alice G. Bevington, in memory of Richard C. Bevington

Carol Bigi, in memory of Eugene J. Bigi

Richard A. and Lisa M. Billy, in memory of Marie Katana

Eileen Bishop, in memory of Joseph J. "Bud" Bishop

Lou Jean Bishop, in memory of George M. Bishop

Mr. and Mrs. Richard W. Black, in memory of Rosanne P.
Mrozinsky

Sam and Joann Black, in memory of Dennis Black

Anne B. Bleehash, in memory of Thomas R. Bleehash

| | |
|--|---|
| BMW Data/Com Sales, LLC | Mr. and Mrs. Mike Cerce, in memory of Frederick W. "Chips" Enfield |
| Betty S. Bolton, in memory of James W. Bolton | Cerner Corporation |
| David D. and Janet L. Bonnell, in memory of Adeline Newell | Ray and Carol Chapman, in memory of Elizabeth Courtney |
| Patricia J. Bopp | Chemway, Inc. |
| Midge, Leanne and Mia Borza, in memory of Betty Bush, John Johnson, Margaret Basiorka, James J. Cox, Linda J. Bush | Devra and Tony Cherrone, in memory of Marie R. Hopper |
| Sherry Bowman | Alan D. and Elaine M. Christianson |
| Barbara A. Brajdic, in memory of William Estok | Betty L. Chundrlek |
| Dr. and Mrs. Edward T. Brajdic, in memory of John Yardley | Betty Cianciotto, in memory of Monte Cianciotto |
| Dr. and Mrs. Hugh W. Brallier, in honor of Brittany Brown | Douglas A. and Dr. Mary Jo Clark |
| Darlene K. Brant, in memory of Roger Brant | Clark Metal Products, in memory of Glema Burke |
| Mark S. Brant, in memory of William Kennedy | Judith and Mark Clayton, in memory of Mary Margaret Oliver |
| Louise Brehun, in memory of John A. Brehun | Gregg Clemens, in memory of Vicky Kane |
| James R. and Donna J. Breisinger | Wayne L. Clemens |
| Romayne C. Breniser | Mrs. Gene G. Cline |
| David B. Bridge, in memory of Edward E. Knupp | Mr. and Mrs. Thomas J. Clingerman |
| Betty Ann Bridge, in memory of Leo J. Bridge | Bernard and Katie Cobetto, in memory of Michael S. Chicka, Sr. |
| Bonnie L. Brilhart and Family, in memory of James E. Brilhart | Communicas, in memory of Frederick W. "Chips" Enfield |
| Lois J. Britt, in memory of George "Dick" Britt | Consolidated Communications |
| Linda A. Brown, in memory of Charles Frederick Brown | Fred C. and Kathleen A. Constantine |
| Thomas A. Brownfield | Gerry and Jim Cooper |
| Dan and Trisha Bubenheim | Joan R. Cooper, in memory of James Cooper |
| Edith Burkley, in memory of Joseph L. Burkley | Donna V. Cope, in memory of Alice Cope |
| Rebecca Burkley, in memory of Joseph L. Burkley | Mary S. Couchenour, in memory of William R. Couchenour |
| Dr. Helen Burns | Dr. William B. Courtney, in memory of Elizabeth Courtney |
| Kathleen and Richard Burroughs, in memory of Paul D. Patla | Covington Investment Advisors, Inc. |
| Wanda L. Burtosky, in memory of Robert Burtosky | Beverly J. Cowan, in memory of Charles D. Cowan |
| Michael and Debbie Busch, in honor of Bob Rogalski | Linda Craft, in memory of Michael S. Chicka, Sr. |
| Tony and Ginger Butala | Craig Communications |
| Jeffrey Cable, Sr., in memory of Floyd E. Cable | Karen A. Craig |
| Robert G. Cable, in memory of Velma Cable | Crandall Foundation A |
| Glenda W. Campbell, in memory of Catherine M. Wadsworth | Mike and Maureen Crevak, in memory of Wallace L. Friedman, Joseph P. Dymond |
| Carla Capretto and Michael Joiner, in memory of Paul D. Patla | Fred and Mary Crocker |
| Barbara E. Carmichael, in memory of Paul Carmichael | Harold and Jacqueline Crosby and Kenny Repko, in memory of Mildred E. Repko |
| Constance K. Carnahan | Regina Crowe, in memory of Donald B. Crowe |
| Dr. J. Stephen Carter, in memory of Dr. George E. Mamo, Dr. Hilbert E. Oskin | Crown Castle Fiber |
| CDW Berbee | Mr. and Mrs. Brian Crystalloski, in memory of Michael S. Chicka, Sr. |
| Maureen Ceidro | Carol J. Cutler, in memory of Karen Cutler |
| | Bertha K. Dalton |
| | Daniels Development Corporation |

Marilyn L. Daniels, in memory of Herbert and Louise Piovesan; in honor of Carrie Polo

Mary Ann and Andrew Danko, in memory of Paul D. Patla

Terry and Nina Daughenbaugh

George and Diana Daugherty, in memory of Antoinette Ray

Fay Daugherty, in memory of Connie Daugherty and Ronald L. Rega

Keith A. and Cindy R. Davis, in memory of Janet Rhodes

Nancy Davis, in memory of Pearl L. Jack

Patricia Davis, in memory of Robert P. Davis

Bob and Dawn Davoli

Betty DelGross Family, in memory of Betty DelGross

Family of John R. DeNezza, in memory of John R. DeNezza

Dr. and Mrs. Lawrence A. DeNino, in honor of Dr. Albert Saloom

Marilyn Denne, in memory of Aiden Denne

Holly DiBiasi

Connie Dickey, in memory of Elda Rosky

Dr. and Mrs. Daniel B. DiCola, in memory of Isabelle and Wallace L. Friedman, Joseph P. Dymond, Robert M. Uphold, Jr.

Roberta R. Dombrosky

Sheryl L. Dorsch, in memory of Pearl L. Jack

Shirley A. Dranzik, in memory of James E. Dranzik

Mary K. Dunaway, in memory of Marie Dunaway

Bill and Phil Dymond, in memory of Charlie Teada

Charles E. Eisentrout, in memory of Dorothy A. Eisentrout

Sharon Enfield, in memory of Frederick W. "Chips" Enfield

Marion Eresh

Joel F. and Cathy M. Etchen

Excels Health Community Relations/Marketing

Excels Health Medical Staff, in memory of Nora A. Whipkey

Excels Health Nursing

Excels Health Patient Accounting

Excels Health School of Anesthesia

Rory A. Fagan, in memory of Patricia O'Rourke

Jule and Stacy A. Falcon, in memory of Bernadette M. Flowers

Janet Farmer, in memory of Orville J. "O.J." Farmer

The Fastener Stop, Inc.

James F. Fearer, in memory of Marcia "Marti" Fearer

Timothy A. and Laura K. Fedele, in memory of Frederick W. "Chips" Enfield

Anita M. Feld, in memory of Dwayne E. Watt

Dr. Emily K. Fellin

Keith and Lisa Fenton, in memory of Donald R. Fenton

Ferguson Law Associates

Jim Ferlin

Mr. and Mrs. Roy W. Fickling

Marie Fink, in memory of Leonard Fink

Betty Jean Fisher, in memory of Chuck Fisher

Effie G. Fletcher, in honor of Maureen Ceidro

Flooring Contractors of Pittsburgh LLC

Connie Fontana, in memory of Domenick Fontana

José and Lauri Ford del Rio, in memory of Paul D. Patla

Fords Complete Construction Service

Patricia A. Fordyce, in memory of Ann Redd

Dan and Marian Foster, in memory of Elizabeth Courtney

Fotorecord Print Center

Alberta Fox

Dr. Carol J. Fox, in memory of Pearl L. Jack

James M. and Dr. Carol J. Fox, in memory of Joseph R. Govi, MD; in honor of Denise Gruss, RN, Mary Mantese

Salvatore J. Franz

Dr. and Mrs. Lawrence Freedberg

Frick, Latrobe and Westmoreland Hospital Schools of Nursing Alumni

Charles Fritz, in memory of Paul D. Patla

James and Cindy Fulmer, in memory of Laura Baxter

Obreda I. Fyock, in memory of Ernest Fyock, Paul D. Patla

Mary Louise Gantz

Anita M. Garr, in memory of Paul D. Patla

Garratt – Callahan

Edie M. and Bernard D. Gaston, in memory of Pearl L. Jack

Dr. and Mrs. George M. Gavin

Kelly Ann Geary, in memory of Doris J. Held

Matthew and Carol Geary, in memory of Marie R. Hopper

M. Caryl Geary, in memory of Henrietta M. Bell, David E. Harr, John R. "Bob" Mazero, MD, Scott A. Kikel, Thomas E. Hudson; in honor of Latrobe Hospital School of Nursing Class of 1959

Bernardine Gelet, in memory of Steven Gelet

Jerome W. Gera, MD

Dr. and Mrs. Thomas P. Gessner

Mercedes S. Getto, in memory of Joseph P. Dymond

Joseph G. Gibson, in memory of Elizabeth Gibson
 Mr. and Mrs. Donald W. Giffin
 Washington Gjebre, in memory of Muzajen and
 Freda Gjebre
 Esther Gleckl, in memory of Gilbert L. Gleckl
 Mr. and Mrs. J. Roger Glunt, in memory of Nancy G.
 Hoffman
 Carol Godor, in memory of Paul J., Paul A., Keith S. Godor
 Valerie J. Good, in memory of Edward E. Good
 Mr. and Mrs. Stephen R. Gooder
 Mark D. Goodstein, in memory of Adeline Newell
 John K. Goodwin, Jr.
 Green Star Trading Company, in memory of Bernadette
 M. Flowers
 Patricia C. Gregg, in memory of Paul D. Patla
 Wayne Greyno
 Kathleen and Joseph S. Grieco, in memory of Marie R.
 Hopper
 Bob and Ella Jean Griffith, in memory of Elnora Fiscus,
 Elsie Hapchuk
 Tricia A. Grimm, in memory of Carl M. Grimm
 Joanne N. Grippo, in memory of George D. Grippo
 Joann Grote
 Michelle Haase, in memory of Robert Haase
 Betty Hackathorne, in memory of Harry R. Thoburn
 Elizabeth A. Haggerty, in memory of James R.
 Haggerty, Sr.
 Rose Marie Hairston, in memory of Charlene Hairston
 Carole Hamerski
 Doris J. Hankey, in memory of Eugene E. Hankey, Sr.
 Janice M. Harr, in memory of William D. Harr
 Connie L. Harrison, in memory of Donald A. Harrison
 Eric C. Hartman, in memory of Cynthia E. Hartman
 Dr. and Mrs. H. King Hartman, Sr., in memory of
 Elizabeth Courtney
 Healthcare Council of Western Pennsylvania
 Cynthia L. and James F. Heater, in memory of
 Raymond D. Shafer
 The Hedderman Family – Domini, Kevin, Andy, Brenny,
 Laura and Addy, in memory of Ernest Martinelli, Jr.
 Andrea M. Hedrick, in memory of Andrew Tomko
 Barbara Hegedus, in memory of Joseph A. Hegedus
 Judi Held, in memory of William J. Held
 William J. Held, Jr., in memory of Doris J. Held
 Donna M. Heller, in memory of Norman Heller
 Christina M. Henderson

Sande Hendricks, in memory of John I. Jenkins
 Charlene M. Hoak
 Marjorie J. Hollis, in memory of B. E. Hollis
 Donna A. Holsopple, in memory of Mary L. Geyer
 Mr. and Mrs. Timothy M. Hoover
 Gary and Debra Horner, in memory of Velma Cable
 Randy and Rosie Horvat, in memory of Hilda I. Horvat
 Elaine Ruth Hudimac
 Pam Huffman
 Keith W. Hutchinson, in memory of John Edward
 Hutchinson
 Betty K. Ikeda, in memory of Albert Lenz
 Dennis R. Immel, in memory of Jacquelyn N. Immel
 Dr. and Mrs. John Irvin, in memory of Harry A. Thoburn
 Harrison J. Jackson
 Jamie Cordial Hall Foundation
 Haley M. and David A. Jamison, in memory of
 Elizabeth Trogolo
 Bess Janik, in memory of Chester F. Janik
 Alma S. Jennings, in memory of Elizabeth Courtney
 Robin S. Jennings, in memory of Emma Fetkovich
 Rosemary Jim, in memory of Richard L. Jim
 Eugene R. Johnson, in memory of Eleanor R. Johnson
 Ronda L. Jones, in memory of Thomas R. Jones
 Arleen A. Jupina, in memory of Genevieve Kovacs,
 Louis C. Kovacs
 Dirk L. Kalp
 Fred and Judy Kalp, in memory of Erma E. White
 Kathleen Kappel, in memory of Adeline Newell
 James J. Karelis, in memory of Carol Karelis
 Roslyn J. Karstedt
 Pamela Katana, in memory of Marie Katana
 Marcella L. Kattera, in memory of Richard A. Kattera
 Drs. Tate M. and Lara M. Kauffman, in memory of
 Joseph R. Govi, MD
 Don and Carol Kayser, in memory of Keith R. Roth
 Lawrence K. Kean, II, in memory of Irene L. Kean
 W. Martin Keck, in memory of Wendell M. Keck,
 Mary N. Keck
 William E. and Lynda G. Keefer, in memory of Keefer and
 Porter Families
 Mr. and Mrs. David M. Kelly
 Elizabeth S. Kelly, in memory of Elizabeth Courtney
 Roger B. and JoAnn Kelsey, in memory of Dr. Ronald L.
 Kelsey, Dr. Kenneth L. Kelsey

George D. and Judith L. Kelvington, in memory of Elizabeth Courtney

Thomas W. and Linda M. Kendro, in memory of Marie R. Hopper

Rosalie Keough, in memory of Warren J. Keough

Susan E. Kester, in memory of Bruce G. Kester

Colleen Klimchak and Joyce Smith, in memory of Mary M. Pavick

Beth Knobel, in memory of Ruth M. Knobel

Peggy and Charles Knoche, in memory of Robert T. Miller

Cindy R. Knupp

Samuel L. and Rhonda Kocovar, in memory of Laura M. Kocovar

Andy and Judy Kocinski, in memory of Donna, Emma, Chuck Chanon

Lorraine Kohl, in memory of James Kohl

Eugene W. Kolano, in memory of Carol Kolano

Elizabeth A. Kozar, in memory of George J. Kozar

William E. Krall

Paul and Diana Kreiling, in memory of Harry Davidson, Libbie Pittman, Lois Jean Palmer Tilley, Robert J. Colainanne, Dawn R. Muenchow, Emma Fetkovich, Joseph P. Dymond, Nancy "Laney" Crozier

Mr. and Mrs. Daniel T. Kremer, in memory of James C. Deforrest

Bob and Joan Krempasky, in memory of Dorothy Petrosky

Darren Krick, in memory of Eleanor Krick

Carole J. Krinock, in memory of Joseph M. Krinock

Deann Krotz, in memory of Joann and Jim Plummer

Kurt Kuenne, in memory of Andrew D. Bagby, MD

Mr. and Mrs. David A. Kuhar

Mr. and Mrs. Richard A. Kuhns, in memory of Catherine M. Yandrick

Elizabeth L. Kunkle

Bonnie Kutzer, in memory of Edward A. Kutzer, Sr.

Wanda Kyper, in memory of Michael C. Kyper

L.J. Aviation

Dr. Joseph and Tamara Labuda, in memory of Joseph R. Govi, MD

Martin J. and Dr. Karen A. Lang

Jacki Latimer, in memory of Mary Ann Ball

Sharon Latimer, in memory of Mary Ann Ball

Latrobe Area Hospital Aid Society, in honor of Kathryn J. Frazier

Latrobe Hospital Pharmacy, in memory of Angelo Bevilacqua, Shirley A. Mueseler

Latrobe Hospital School of Nursing Class of 1959, in memory of Elizabeth Macko Elder

Latrobe Presbyterian Church

Susanne and Patricia Lawlor, in memory of Sandra P. Smail

Grace M. Lawther in memory of William J. Lawther

Kimberly Leese, in memory of Dwayne E. Watt

Florence M. Lenhart, in memory of George A. Lenhart

Bruna Leonard, in memory of Reno Vesco, Sr.

Dr. and Mrs. Gene F. Leonard

Kenneth C. and Kathleen Lepidi, in memory of Laurie K. Lavelly, Joseph L. Burkley

Limbach Company, LLC

Jacquelin Lindsey, in memory of Robert L. Lindsey

Henry K. Little, in memory of Rose M. Little

Susan Loftis and David Hacker, in memory of Eugene F. Hacker

Brenda Long, in memory of Andrew D. Bagby, MD

Dr. Ron and Mary Long, in memory of Joseph R. Govi, MD

Joseph Lopatich, in memory of Ann Lopatich

Dr. Florita C. Lopez and Dr. Govind P. Kachhadiya, in memory of Joseph R. Govi, MD

Stuart M. and Deborah R. Louchheim

Barbara Love, in memory of Joseph P. Dymond

Jim and Thelma Lowe, in memory of Velma Cable

Debra Luther, in memory of Sally Wisner

Allison Lutz

Patricia M. Maccarelli, in memory of George A. Maccarelli

Robert W. and Carolyn L. Machen, in memory of Melvin Reese

Michelle L. and Shawn D. Malone, in memory of Michael Malone

Anna Mae Malt, in memory of William F. Malt

Myra Mamo

Anita Lavin Manoli, in memory of Charles G. Manoli, Sr., E.F. Sr. and Rose Lavin, E.S., Jr. and Irene Lavin, Placido and Anna Manoli, Pauline Manoli, Lois Jean Palmer Tilley, M. Jerry Palmer, Virginia "Ginnie" Saxman Wandrisco; in honor of Helen Kissell Burns

Mary Mantese, in honor of Dr. Helen Burns

Gloria P. Manzi

Harry R. and Elizabeth A. Marker

Joseph B. Markovich, in memory of John and Ann Markovich

Bonnie L. Marne, in memory of Adeline Newell

Bonnie Marron, in memory of John T. Marron, Jr.

John Marron Jr. Family, in memory of John T. Marron, Jr.
 Donna Marsili
 Dean Matanin, in memory of Drew Matanin
 Cynthia Mauro, in memory of Robert T. Miller
 Mr. and Mrs. Floyd E. Maxson, in memory of Julius Siko,
 Richard Siko
 Beth A. Maxwell
 Mayers Electric Company, Inc.
 John and Joyce Mazero
 Rosemary P. Mazero, in memory of John R. "Bob"
 Mazero, Robert J. Colaianne, Lois Jean Palmer Tilley,
 William Kuhar, Thelma Kosmach, John W. Markiewicz,
 Michael Crevak, Nancy R. "Laney" Crozier, William
 L. Friedman, Joseph P. Dymond, George A. Hankins,
 Mary A. Moff, Dolores M. Horansky, Cheryl J. Kondrich,
 Paul B. Burick, Patricia Smith, Marion Gregory Roof,
 Harry Davidson, Violet Crevak, Ed Hestin, Dr. Harold E.
 Gordon, Lonnie J. Prah, Charles J. Moff, Jr.
 MBM Contracting, Inc.
 Robert J. McBride, in memory of Kathleen McBride
 Julene McClain and Pat Jones, in memory of
 Naomi McClain
 George McClellan, in memory of Adeline Newell
 Sheila McCune, in memory of Dorothy J. Patik
 Sally K. McDonald, in memory of Elmer J. McDonald
 John S. McDowell
 Nancy J. McFarlane, in memory of Frank J. Decarlo
 Walter M. McGuire
 Charlotte and Jeffery McIntire, in memory of John
 Robert McQuaide
 The Children and Grandchildren of E. Louise McNamara,
 in memory of E. Louise McNamara
 Ann L. and Barry R. McNeely, in memory of Mary Ann Ball
 Ashley S. Mears
 Catherine J. Mechling
 Michael and Vicky Meehan, in memory of Dolores
 Shrader
 Tom and Kathy Meehan
 Patricia A. Mehallick, in memory of Julia Ann Stanek
 Mr. and Mrs. Armour N. Mellon
 Richard A. Mellon
 Mr. and Mrs. Seward P. Mellon, in memory of Mary
 Bryant Skoloda
 R. Joanne Metz, in honor of Julia Metz
 Carolyn J. Meyers, in memory of Charles "Duke" Meyers
 Nancy L. Michael, in memory of Ron Yeskey
 Mary F. Mickinak

Ben E. and Jane A. Miedel
 Bernice M. Miedel, in memory of Frank F. Miedel
 Mandee L. Mikeska, in memory of MaryAnn Mizikar
 Jim Millen, in memory of Beverly H. Millen; in honor of
 Ed Washburn, Nancy Gombos
 Bernie and Halla Miller, in memory of Carol A. Miller
 Helen L. Miller, in honor of Barbara Wang, MD
 Suzanne M. Miller, in memory of David W. Miller
 Mark Milovats
 Kathleen L. Milyak, in memory of Robert P. Milyak, Sr.
 Susan Mitchell, in memory of Frederick W. "Chips"
 Enfield
 Geraldine Mizikar, in memory of Michael J. Mizikar, Sr.
 Dr. Ron and Mary Monack, in memory of Joseph Lopuch
 Thelma R. Mondock, in memory of Richard P. Mondock
 Liz Monstrola and Family, in memory of Patricia
 Opsitnick
 Jill Montalvo, in memory of Gwen Meneghini
 Debbie Monticue, in memory of Mildred Monticue
 James A. Moore, in memory of Lois J. Moore
 Patricia H. Moore, in honor of Children
 Jerome Moran, in memory of John J. Moran
 Becky Mormack, in memory of Leona Ruth Stein
 Stacey S. Morrison and Delores Rhodes, in memory of
 Charles Rhodes
 Mr. and Mrs. Joseph A. Mosso, Sr., in memory of
 Nancy "Laney" Crozier
 Mt. Pleasant Township Lions Club, in memory of
 Deceased Members of Mt. Pleasant Township
 Lions Club
 William K. Muffley
 Margaret G. Mulcahy, in memory of Mary Bryant Skoloda
 Gregory Murman, in memory of Faith Murman
 Elizabeth A. Murray, in memory of Pearl L. Jack
 Dorothy J. Musho, in memory of Joseph L. Musho
 Keith Muth in memory of Adeline Newell
 Karen Myers, in memory of Frank Makara, Joey Tipinski,
 Mary L. McDermott
 Linda M. Myers, in memory of William E. Myers
 Alice Nagy, in memory of Carl J. Nagy
 Deborah A. Naponic, in memory of Terry J. Naponic
 Gail L. Nega, in memory of Paul D. Patla
 Susan Nega, in memory of Paul D. Patla
 James E. Neil
 Charles and Edith Nevins, in memory of Laurie K. Lavelly

Eric Noel, in memory of Earl C. Hamilton
 Regina M. Noel, in memory of David J. Noel, Sr.
 Albert J. Novak, Jr.
 Albert J. and Sally Anne Novak, in honor of Bill Storrs; in memory of Pearl L. Jack
 Alfred and Audrey Novak, in memory of Michael S. Chicka, Sr., Deceased Members of Novak Family
 O.Z. Enterprises, Inc.
 Michael and Peggyann H. O'Bradovich, in memory of Hugh S. Haggerty
 Regina and David L. O'Brien, in memory of Rose M. Hill
 Barbara and Donald Obriot, in memory of Paul D. Patla
 Barbara C. Off, in memory of Nancy G. Hoffman
 Richard C. Okonak
 Joan M. Orlando
 Jean Oskin, in memory of Hilbert E. Oskin, MD
 Dr. and Mrs. Wylie L. Overly
 Beth Ann Paesano, in memory of Jane L. Litzinger
 Mr. and Mrs. John J. Palek, in memory of Helen M. Palek
 Ottavia R. Palko, in memory of Roseanne P. Mrozinsky
 Christine Palmer, in memory of Irene J. Brisbane
 Dr. and Mrs. John S. Parker
 Mary Jo Paterline, in memory of Paul D. Patla
 Nellie M. Patula, in memory of Frank J. Patula, Sr.
 James R. and Georgia M. Pavlik
 Laurie K. Peddicord, in memory of Anthony Mauro
 Mr. and Mrs. James Pedelty, in memory of Paul D. Patla
 Alacyn Y. Pegher, in memory of Herbert J. Pegher
 M. Elizabeth Pepper, MD, in memory of Joseph R. Govi, MD
 Linda N. Peters, in memory of Joseph E. Norris
 Nancy Petro, in memory of Robert Petro, Cindy Petro
 Petros Family - Argy and Christa, in memory of Frederick W. "Chips" Enfield
 Barbara Z. Peyman, in memory of Leigh Peyman, Ruth Zimmers
 Kendall Pfeifer, in memory of Marlene F. Schultz, Leona Ruth Stein
 Kathy Pfouts, in memory of William R. Pfouts
 Bonnie Pierre, in memory of Mary Bryant Skoloda
 Frances C. Piesetzkje, in memory of Stanley R. Piesetzkje
 Tom Pinge, in memory of Mary H. Pinge
 Cathy A. Piper and Linda Balles, in memory of Angeline L. Chelan
 Howard S. Pittle, MD

Pittsburgh Interior Systems
 Pittsburgh Steelers LLC
 Richard A. Platt
 Glenn R. Plummer, in memory of George A. Firment, John N. Krinock, Carl Burlas
 Sallie Plummer, in memory of Clarence J. Plummer
 Lilly Poche, in memory of Richard E. Poche
 Barbara K. and John M. Podowski, in memory of Marie R. Hopper
 Bernadette A. and Duane M. Ponko, in memory of Marie R. Hopper
 Jacqueline F. Powell, in memory of John R. "Bob" Mazero, MD, William P. Powell, Thomas C. Carrick, Paul King; in honor of Thomas P. Gessner, Norma Samide, Vicki DiCola, Maureen Crevak
 Nancy J. Pratt, in memory of Irving A. Pratt, Jr.
 Premier Medical Systems, in memory of Paul D. Patla
 Melvin H. Price, in memory of Carol A. Price
 Patricia A. Pricener, in memory of Marie R. Hopper
 PRISM Response, Inc.
 Procirca
 PWA Wealth Management
 John M. Pyda, in memory of Debra A. Pyda
 Alice Pollard Quetot, in memory of Esther Belle Pollard
 Radiologic Consultants, Ltd.
 Ronald N. Raimondo
 Judith A. Raishart, in memory of Robert D. Smith
 Lindley D. Rand, Jr., in memory of Diana Rae Bush-Halverson
 Lisa M. Randall, in honor of Joe Alsippi
 Joy Rankin, in memory of Paul D. Patla
 Anthony R. Rebo, in memory of Loretta A. Rebo
 Kathleen G. Rega in memory of Ethel B. Gross
 Mr. and Mrs. Sean M. Reilly
 Richard F. Renchko, in memory of Lucy Renchko
 Lourie Repp, in memory of Marlene F. Schultz, Leona Ruth Stein
 Richard B. Guskiewicz Assoc., P.C.
 Richard K. Mellon and Sons, in memory of Mary Bryant Skoloda
 Beryl Richardson, in memory of William R. Richardson
 Ridgeview Tenants Council, in memory of Amanda C. Kozay
 Ridilla Family Partnership, in memory of Lois Jean Palmer
 Rienzi & Rienzi Communications Inc., in memory of Anthony G. Mauro

John F. and Debarah J. Rohe, in memory of Frederick W. "Chips" Enfield

Lucille M. Ross, in memory of Vaughn C. Ross

Mr. and Mrs. Donald J. Rossi

Bob and Candy Rost

Donna L. Ruble

Susan B. Rule, in memory of Bobbie Benkowski

Betty Rushbrook

Philomena Ryan and Maria Rossetti, in memory of Ernest Martinelli, Jr.

Lee Sacharov, in memory of Richard P. Sacharov

Saint Vincent Archabbey, College and Seminary

Saltsburg Middle/High School Student Body, in honor of Teacher battling cancer

Dr. and Mrs. Jeff L. Samide, in honor of Maureen Crevak, Vicki DiCola, Thomas P. Gessner, Albert J. Novak

Josephine C. Sandzimier, in memory of Marion Sandzimier

Dr. John T. Santarlas, in memory of Patricia Smith, Dave Dunlap

Ralph and Donna Scalise

Steven P. and Nancy McDermott Scheeren, in honor of Dr. William and Judy Scheeren

Dr. and Mrs. Bernard C. Scherer, in memory of Stanley L. Joyce, Sr.

Betty M. Schrack

Pamela G. Schuman

Lisa F. Sciuillo, in memory of Louis A. Sciuillo

Charles M. and Dora V. Seamens, in memory of Margaret M. Seamens

Maryann Seanor, in memory of Anna and William Matrisch

SEI Investments

Drs. Michael and Melanie Semelka

Farley Carr Shiner, in memory of Adeline Newell

Marlene M. Short, in memory of Charles J. Short

Ronald L. and Julia E. Shroyer, in memory of Loretta Shroyer

Signs By Tomorrow

Dr. and Mrs. James W. Sillaman

Maryann Singley

Douglas L. and Anne B. Sisson

Audrey Skergan, in memory of Donald William Skergan

Patricia A. Skero, in memory of Joseph Skero

Rudy Slaninko, in memory of Bonnie C. Slaninko

John and Donna Slavnik, in memory of Paul D. Patla

Joseph R. and Bertha K. Sliz

Priscilla E. Sloss, in memory of David S. Barnes, Sr.

Paul and Jen Smetak, in memory of Eleanor Michaels

Jane C. and Demerst B. Smit, in memory of Adeline Newell

Jacqueline Smith

Jody Smith, in memory of Mary M. Greek

Kathryn A. Sobinsky, in memory of Frederick W. "Chips" Enfield

Mr. and Mrs. Jerry R. Soles, in memory of Marie R. Hopper

Ronald A. Soltis, in memory of Peggy L. Soltis

Kathleen M. Soltys, in memory of Louis E. Soltys

Robert J. Sommer, in memory of Sally L. Sommer

Barbara T. Spencer

Jane Spencer, in memory of Charles E. Spencer, Jr.

John M. and Donna B. Sphon, in memory of Pearl Jack

Marlene Spirko, in memory of Richard Spirko

Christine Spisso Mansour, in honor of Adrienne and Mallory Mansour; in memory of Frank and Edan Spisso

Alton Sprague and Helen Vivian, in memory of Andrew D. Bagby, MD

SSM Industries, Inc.

Julia Stanek Family, in memory of Julia Ann Stanek

A. Stash, in memory of Daniel Bell

Dr. and Mrs. William D. Stavisky, in memory of Nancy R. "Laney" Crozier

Ruth Ann Steedle, in memory of John C. Thomas

Joseph A. Stefano, in memory of Ruth A. Stefano

Elizabeth A. Stiffler, in memory of Donald Stiffler

John and Betsy Stilley, in memory of J. W. Stilley, MD

Debra Stillwagon, in memory of Diana Rae Bush-Halverson

Bob and Jane Stover, in memory of Elizabeth Courtney

Brad and Andrea Stufcheck, in memory of Frederick W. "Chips" Enfield

Mrs. Janice Szalanczy, in memory of Raymond Szalanczy

Bob and Mitsie Szostak, in memory of Pearl L. Jack

The Rev. Paul Taylor, OSB

Technimark

The Little Shop

Catherine Thoburn, in memory of Harry A. Thoburn

Kathy Thomas and Beverly Depetris, in memory of Rita Papuga

Patricia L. Thompson, in memory of Mary L. Salsgiver, Daniel J. Salsgiver

George and Sally Thuransky, in memory of Robert C. Baughman
 Ruth R. Tolbert
 Edna Tosh
 Tudi Mechanical Systems
 John J. and Priscilla J. Turcik
 Kelly S. Turer
 William T. Turnsek, in memory of Deanna L. Turnsek
 Joseph J. Ukish
 Edward S. Ungvarsky
 Delores Urick
 Mark G. Vadas
 Shirley G. Veahman
 Vivian B. Venturino, in memory of Frederick Wilkins
 Veterans of Foreign Wars Auxiliary No. 3368 District 27, in memory of Hazel S. Macey
 Caroline A. Vickery, in memory of Michael S. Chicka, Sr.
 Mr. and Mrs. Ronald P. Vijuk, in memory of Ernest Martinelli, Jr.
 J. Dolan Vogle
 Paul J. Volkmann, in memory of Mary M. Greek
 Maria Von Mickwitz, in memory of Barbara S. Guine, Arthur L. Divittis
 Walmart Foundation, in honor of Joyce Wigand
 Cyndi Walters
 John L. Wandrisco
 Dr. Barbara K. Wang and Mr. William Kennedy
 David E. and Linda L. Weinel, in memory of Pearl L. Jack
 Kathleen A. Weiss, in memory of Russell F. Upholster, Sr.
 Western PA Electrical Labor Management Cooperation Committee
 Westmoreland County Community College
 Westmoreland Hospital CT Department, in memory of Richard L. Rhoades
 Westmoreland/Frick Hospital Foundation
 WH Applications Team, in memory of Paul D. Patla
 Bernard R. White, in memory of Debbie A. White
 Dr. and Mrs. A. Roger Wigle, in memory of Barbara Stopa
 Catherine Wilcosky, in memory of Nancy A. Wilcosky
 Catherine Wilkins, in memory of Paul A. Wilkins
 Agnes A. Williams, in memory of Donald Williams
 Dr. Denise R. Williams and Mr. Sidney Williams, in memory of Joseph R. Govi, MD
 Marguerite A. Williams, in memory of David H. Williams

Dr. and Mrs. John S. Wilson, in memory of Elizabeth Courtney
 Judi Wilson, in memory of Edward M. Caughey
 Ida E. Wilttrout, in memory of Donald E. Wilttrout
 Robert R. and Linda T. Winter, in memory of Margaret Thielz
 Sue Wintermeyer
 Pam Witherspoon, in memory of Lois Jane Dick
 Sandy and Doug Witherspoon, in memory of Edgar R. Shandel
 Claudia J. Wolfe, in memory of Mom and Dad
 Rose Wooten, in memory of Glema Burke
 Jana Wyzevich, in memory of Paul D. Patla
 Rose M. Yoschak
 Craig Yost, in memory of Margaret Yost
 Marcy J. Yurinko, in memory of Joseph P. Angeski
 YWCA Greater Pittsburgh, in memory of Frederick W. "Chips" Enfield
 Shelley A. Zamiskie, in memory of Kevin A. Zamiskie
 Dorothy M. and Daniel J. Zangrilli, in memory of Marie R. Hopper
 Zappone Family Fund
 Ralph D. and Maryann Zatezalo, in memory of Marie R. Hopper
 Gloria J. Zidak, in memory of Betty J. Manzulich
 Michael Zidak Estate
 Dolores Zilli, in memory of Julius Zilli
 Keith J. Zimmer, in memory of Paul D. Patla
 Dr. Robert Zimmerman
 John and Debbie Zowacki, in memory of Ernest Martinelli, Jr.



Please consider
 Latrobe Area Hospital
 Charitable Foundation
 in your estate plan.



Latrobe Area Hospital Charitable Foundation

Officers and Directors - 2019

Thomas P. Gessner, MD, Chair
Barbara K. Wang, MD, Vice Chair
Douglas A. Clark, Secretary
Joseph A. Scarpo, Treasurer
David S. DeRose, Esq.
Phil A. Dymond
Richard Okonak
Wylie L. Overly, MD
Sam Reiman
Phyllis Ruffner
Douglas L. Sisson
William Stavisky, EdD.
Reverend Paul Taylor, OSB, PhD.
Ruth Tolbert

Administration and Staff

Albert J. Novak, Jr.,
Vice President and Chief
Development Officer, Excelsa Health
Holly DiBiasi,
Manager, LAHCF
Maureen Crevak,
Executive Assistant, LAHCF
Vicki DiCola,
Community Liaison, LAHCF

Founding Officers and Directors – 1995

Arnold D. Palmer, Chair
Sandra S. Mellon, Vice Chair
John R. Mazero, MD, President
Douglas A. Clark, Secretary
Richard B. Guskiewicz, Treasurer
Nancy R. Crozier
Thomas W. Moran, Jr., MD
Joseph A. Mosso
Thomas H. O'Brien
Winifred Palmer
George H. Taber
Virginia Wandrisco
C. Philip Weigel

NOW is the time! Use your IRA to support Latrobe Hospital!

With an IRA CHARITABLE ROLLOVER, you are now able to make a gift from your IRA account to qualified non-profit organizations without any federal income tax liability.

Here's how it works:

- You must be 70 ½ years of age or older
- Instruct your IRA administrator to make a gift directly from your IRA to Latrobe Area Hospital Charitable Foundation (ask us for a sample letter of instruction)
- IRA Rollovers DO count towards your minimum required distribution for the year

There are some limitations:

- The gift is not subject to income tax therefore it is not tax-deductible
- Gifts may be outright contributions only
- You may make up to \$100,000 in charitable gifts from your IRA

ACT NOW, so there is time to ensure your gift will be made this calendar year.

For more information or to remember the Foundation in your estate plan, contact Holly DiBiasi, Foundation Manager at hdibiasi@excelsahealth.org or 724-537-1983.